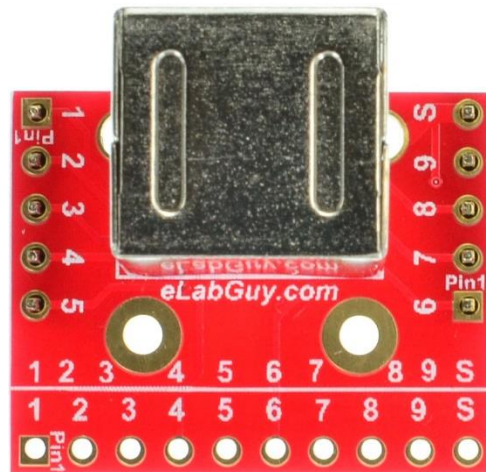


mDIN7-F-BO-V2A

1. Description:

mDIN7-F-BO-V2A is a simple mini Din 7 Female socket breakout board. It brings all 7 pins of a mini Din 7 Female socket to screw terminal blocks or headers for easy testing, prototyping and breadboard connection. For breadboard connections, user can use the 10pin header on the bottom for a sideways connection. User can also use the two 5pin headers on both sides of the breakout board to connect to the front end of the breadboard for a steady connection.



2. Features:

- All 7 pins of a mini Din 7 Female socket brought out to headers or screw terminal blocks
- Various connecting method chosen by users.
- 2 mounting holes with 2mm diameter hole size
- 1.0"(25.4mm)X0.8"(20.32mm) board dimensions

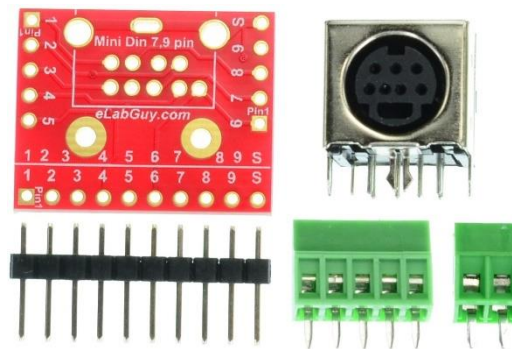


Figure 1: Parts inside the kit
(Note: the module is not assembled, user can decide which connector to use on the module.)

3. Parts:

- 1) 1pc X mDIN-F-BO-V2A PCB
- 2) 1pc X mini Din 7 Female socket
- 3) 1pc X 5pin 0.1"(2.54mm) spacing terminal block
- 4) 1pc X 2pin 0.1"(2.54mm) spacing terminal block
- 5) 1pc X 10pin 0.1"(2.54mm) header

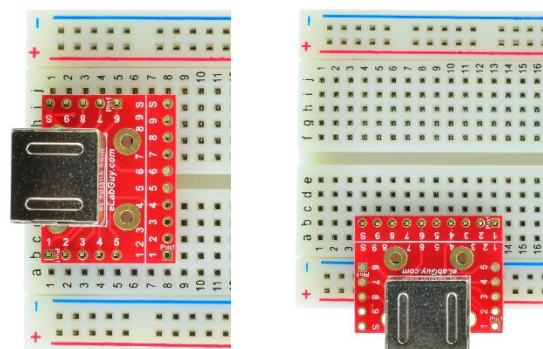
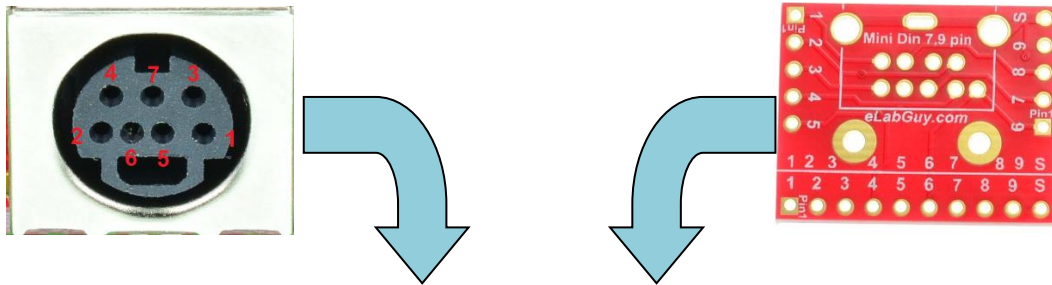


Figure 2: Example of connecting the mDIN7-F-BO-V2A on breadboard



Figure 3: mDIN7-F-BO-V2A various connections



Mini Din 7 Female Connector	mDin-F-BO-V1A PCB
1	1
2	2
3	3
4	4
5	5
6	6
7	7

Figure 4: Mini Din 7 Female connector to mDin-F-BO-V2A PCB pinout matching table

Related products from eLabGuy:



mDIN4-F-BO-V1A **mDIN5-F-BO-V1A** **mDIN6-F-BO-V2A** **mDIN8-F-BO-V1A** **mDIN9-F-BO-V2A**